

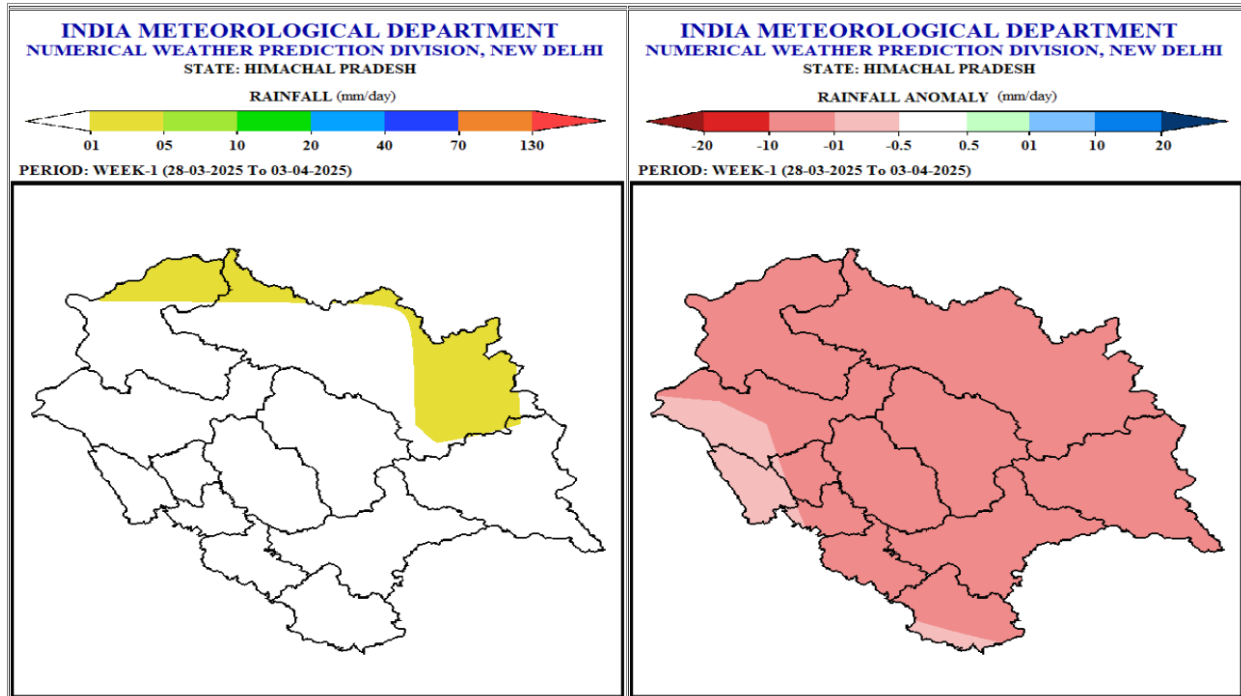
## Extended Range Weather Forecast

Date:- 27.03.2025

Weather Forecast and Warning for two weeks w.e.f. 28<sup>th</sup> March, 2025

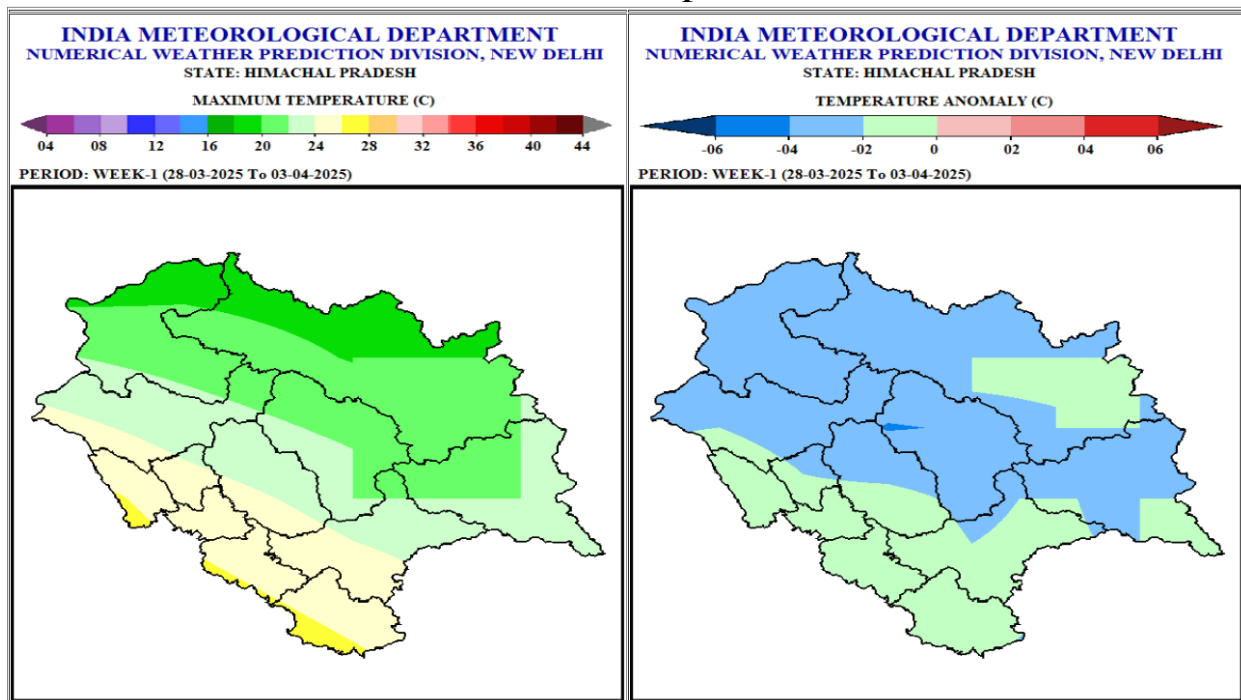
Week 1 (28<sup>th</sup> March 2025 – 3<sup>rd</sup> April 2025)

### Rainfall



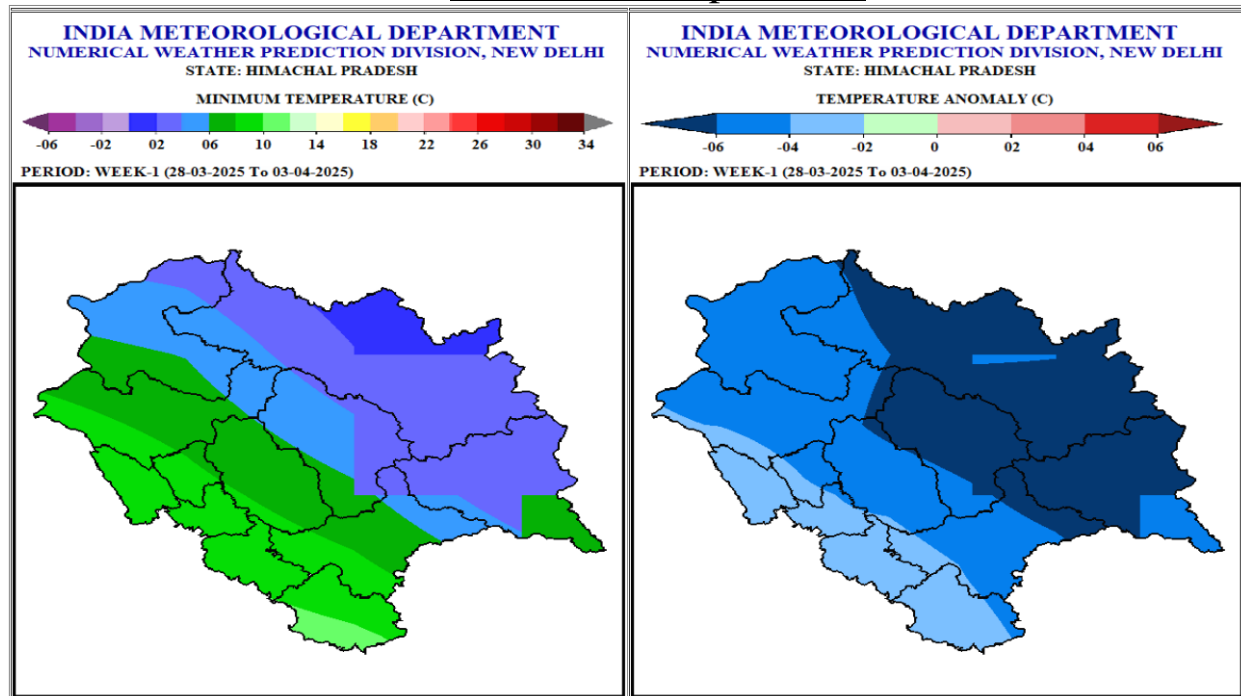
- Light rain very likely at isolated places over the higher reaches of the state during some days of the week 1.
- Rainfall anomaly very likely to be below normal over the most parts of state in the week 1.

## Maximum Temperatures



- Maximum Temperatures are very likely to be in the range of 18-22°C over many parts of the high hills; in the range of 20-24°C over most parts of mid hills and in the range of 24-28°C over most parts of the lower hills/plains during many days of the week 1.
- Maximum Temperatures very likely to be normal to below normal over most parts of the state in the week 1.

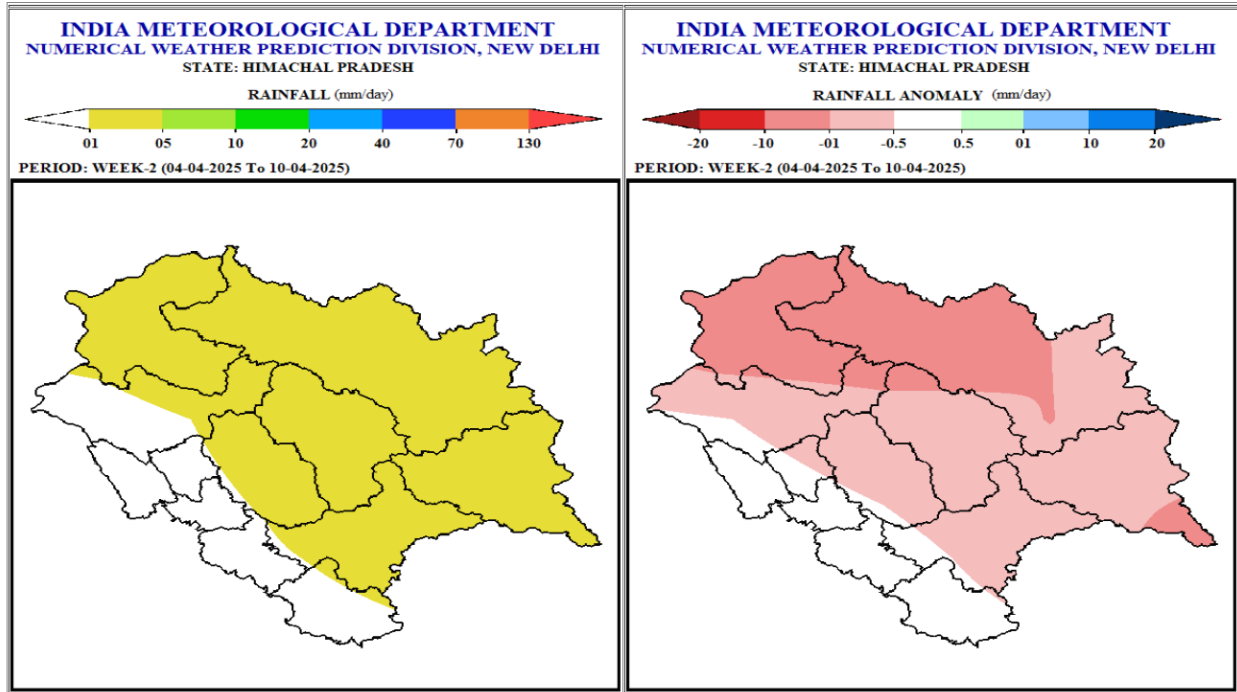
## Minimum Temperatures



- Minimum Temperatures are very likely to be in the range of 6-10°C over most parts of lower hills/plains and in the range of 2-6°C over many parts of mid hills and in the range of 0 to 6°C over most parts of high hills during many days of the week 1.
- Minimum Temperatures are very likely to be normal to below normal over most parts of state in the week 1.

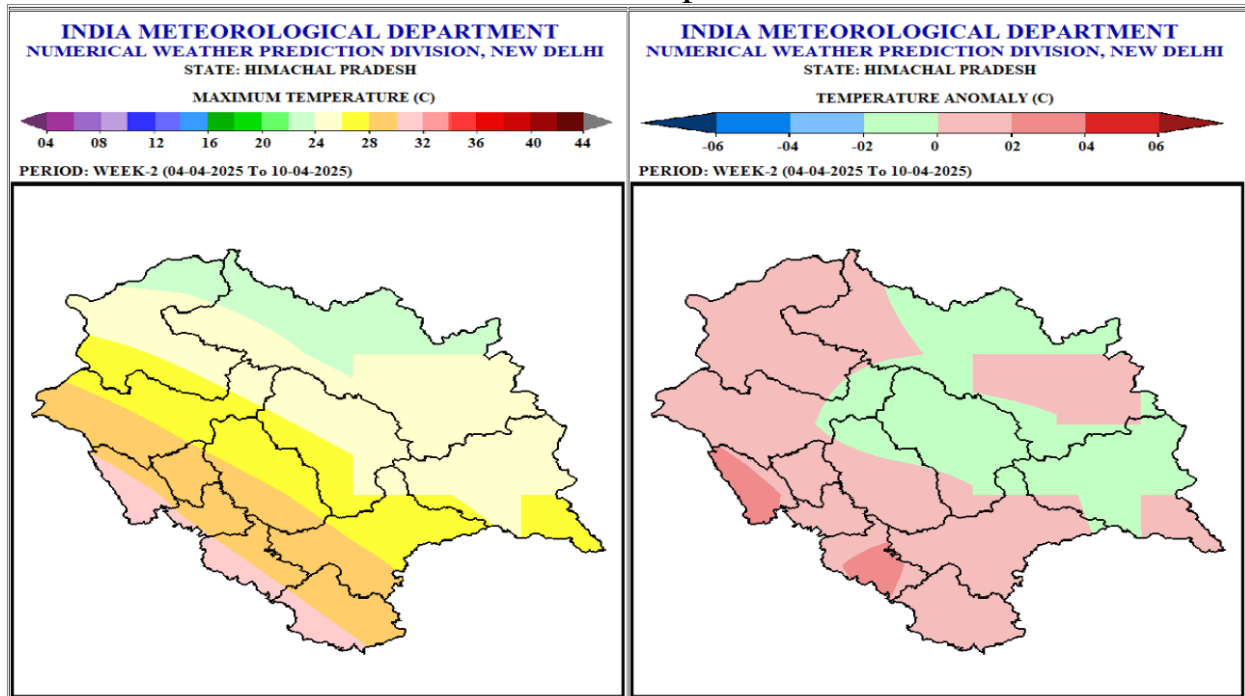
## Week 2 (4<sup>th</sup> April 2025 – 10<sup>th</sup> April 2025)

### Rainfall



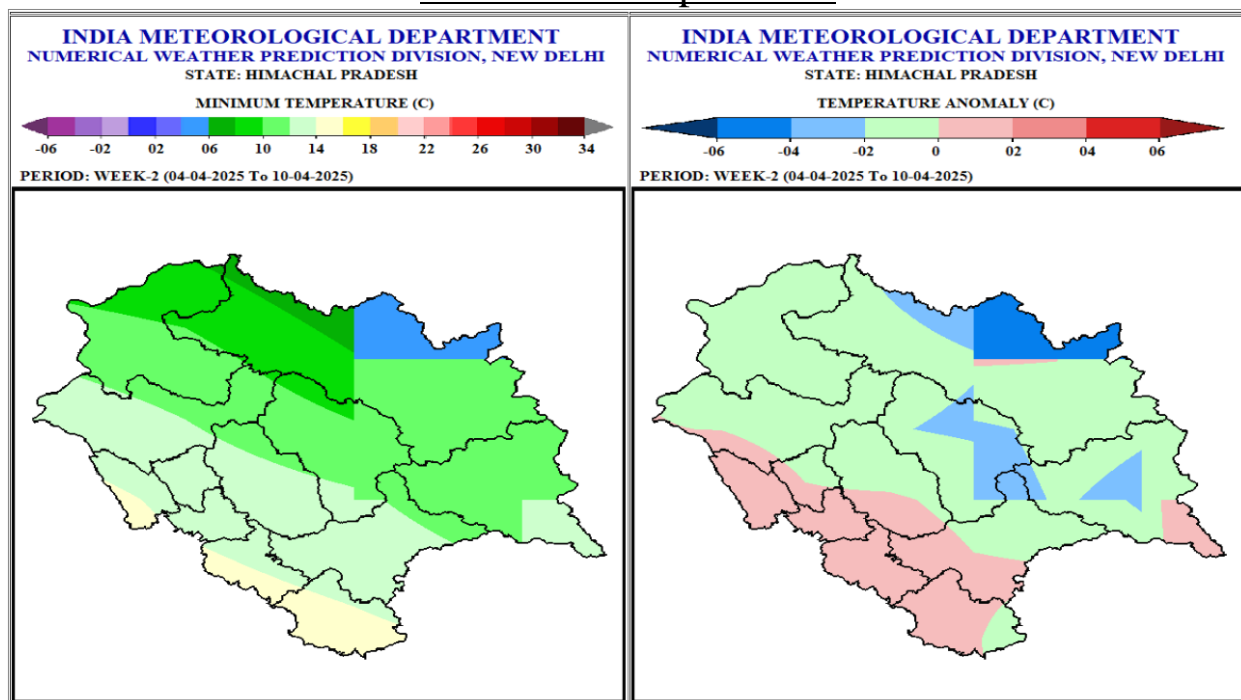
- Light rain likely at isolated places over the higher reaches of the state in the week 2.
- Rainfall anomaly likely to be below normal over some parts of higher reaches and near normal over rest parts of the state in the week 2.

### Maximum Temperatures



- Maximum Temperatures are likely to be in the range of 22-26°C over most parts of the high hills, in the range of 24-28°C over most parts of mid hills and in the range of 26-32°C in the lower hills in the week 2.
- Maximum Temperatures are likely to be normal to near normal over most parts of the state in the week 2.

## Minimum Temperatures



- Minimum Temperatures are likely to be in the range of 12-16°C over most parts of lower hills/plains; in the range of 10-14°C over most parts of mid hills & in the range of 4-12°C over many parts of the high hills in the week 2.
- Minimum Temperatures are likely to be below normal over some parts of high hills and near normal over rest parts of the state in the week 2.

### Outlook for next 2 weeks

Week	Max. Temp	Min. Temp.	Rainfall Anomaly
<b>Week 3</b> 11 <sup>th</sup> April to 17 <sup>th</sup> April	<b>Plain areas:</b> Normal <b>Mid hills/ low hills:</b> Normal	<b>High hills:</b> Below Normal <b>Low Hills/Plain areas &amp; Mid hills:</b> Normal to Near normal	Normal to Above Normal
<b>Week 4</b> 18 <sup>th</sup> April to 24 <sup>th</sup> April	<b>Plain areas:</b> Normal <b>Mid hills/ low hills:</b> Normal	<b>High hills:</b> Normal <b>Low Hills/Plain areas &amp; Mid hills:</b> Normal to Near Normal	Normal to Below Normal

Regards  
Met Centre Shimla

**For latest Weather Bulletin and warnings kindly visit following links**

Website: <https://mausam.imd.gov.in/shimla/>

Facebook: <https://www.facebook.com/profile.php?id=100018411811087>

Twitter: <https://twitter.com/himachalmausam>

IG: [www.instagram.com/metcentresml/](http://www.instagram.com/metcentresml/)